

Pressure Gauges - MC 063



- Capsule diaphragm gauges are used to measure low pressure values
 - Do not use if high viscosity fluids or crystallisable form available
 - Used for measuring liquid and gases which are suitable to copper alloys.
 - If an aggressive gas or liquid to be measured ,stainless steel 316L is advised.
 - In vibrating environments or with pulsating pressures liquid filled types should be use
- Industry Sector: Medical devices, Gas, Energy lines, and Machinery Manufacturing



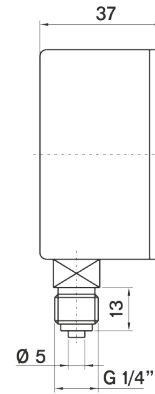
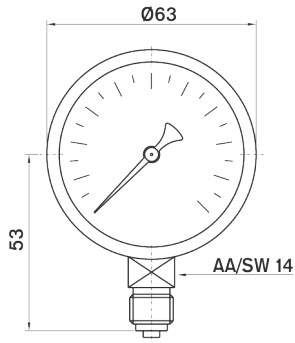
Usage Properties

Conformity	· EN 837 - 3
Operating Pressure (max.)	· Must not exceed %75' of full scale.
Accuracy Class	· CL 1.6
Protection Rate	· IP 41
Mechanical Vibration Test	· 10Hz-150Hz 1 Octave/minute - 3 axis
Mechanical Shock Test Load	· 15g
Optimum Operating Range	· Between 0,1 x PN and 0,75 x PN
Fluid Temperature	· Maximum + 60 °C
Ambient Temperature	· - 20 ... + 60 °C
Storage Temperature	· -40 ... +70 °C

Constructive Properties

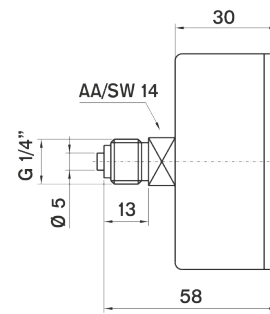
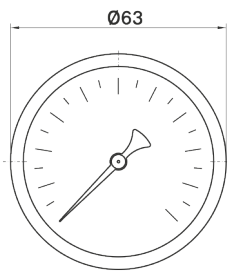
Mounting Type	· Bottom Connection
Scale Unit	· mbar
Scale Range (PN)	· 0/25 · 0/40 · 0/60 · 0/100 · 0/160 · 0/250 · 0/400 · 0/600 · 0 - 1000
Vacuum Scale Range	· -1000 / 0 · -25 / 0 · -40 / 0 · -60 / 0 · -100 / 0 · -160 / 0 · -250 / 0 · -400 / 0 · -600 / 0
Case	· Steel
Bezel	
Movement	· Brass
Window	· Polycarbonate
Wetted Parts	· Copper Alloy
Connection	· G 1/4" B
Dial	· Aluminum
Pointer	· Aluminum
Welding	· Soldering

Technical Drawings - MC 063



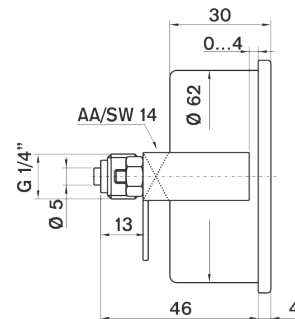
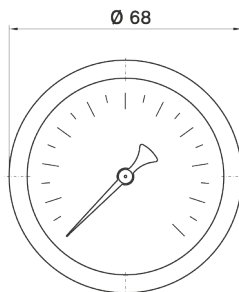
gr.
580

063 13 001 /



gr.
690

063 13 002 /



gr.
750

063 13 003 /